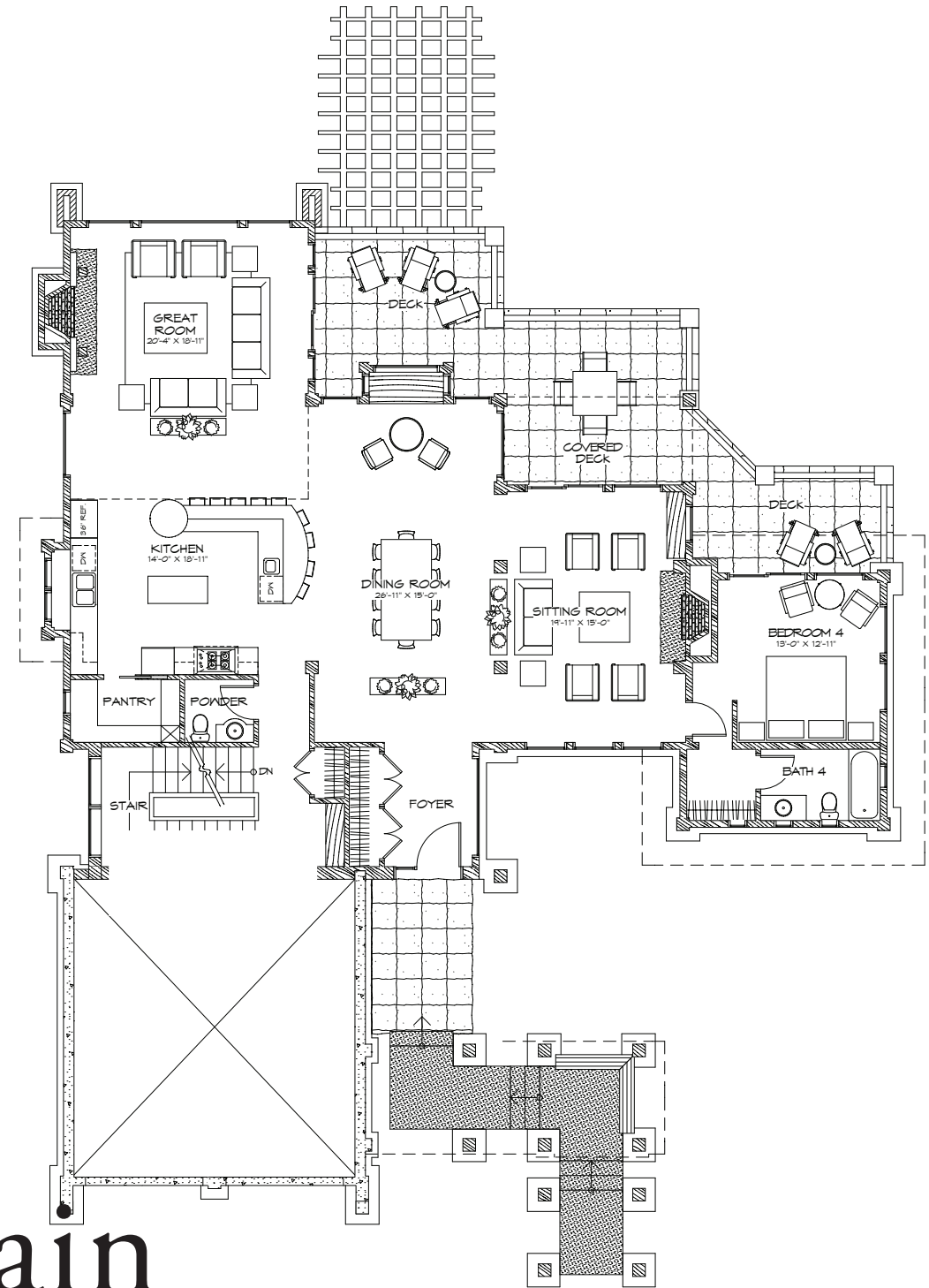
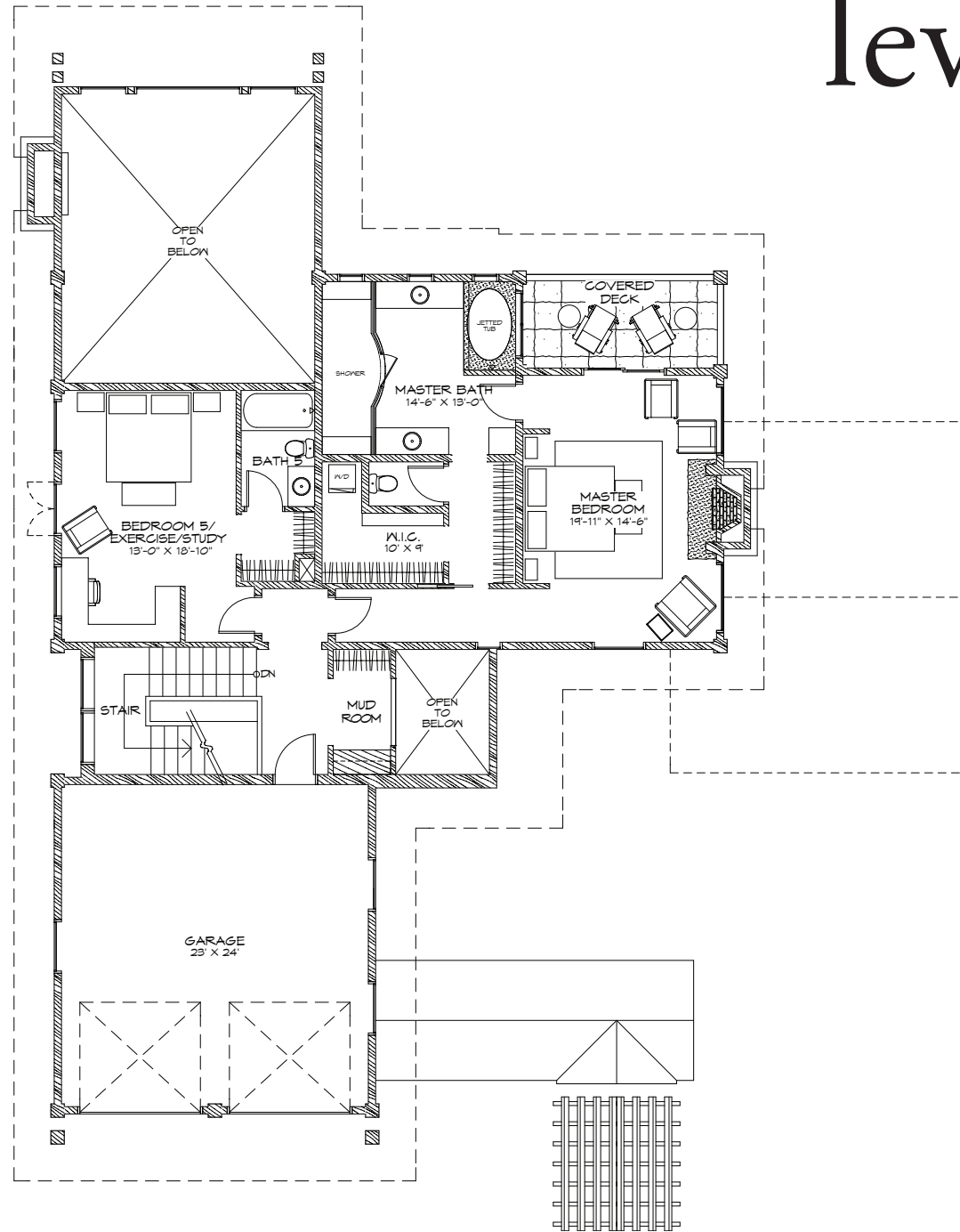


lower level

Ski-Porte-Cochere • Skier's lounge with Fireplace & Wet Bar • 3 Bedrooms Suites • Powder Room • Laundry

15 NAKOMA COURT
 APPROX. 5,818 SQUARE FEET
 6 BEDROOMS & 8 BATHROOMS
 \$6,250,000

upper level



main level